

UNITED  
MAJOR SCALES

1 - B $\flat$  MAJOR SCALE (CONCERT B $\flat$ )

Musical notation for the B $\flat$  Major Scale (Concert B $\flat$ ) in bass clef, 4/4 time. The scale is written in a single line, starting on B $\flat$  and ending on B $\flat$ . The notation includes a key signature of two flats and a time signature of 4/4. The scale is written in a single line, starting on B $\flat$  and ending on B $\flat$ .

2 - E $\flat$  MAJOR SCALE (CONCERT E $\flat$ )

Musical notation for the E $\flat$  Major Scale (Concert E $\flat$ ) in bass clef, 4/4 time. The scale is written in a single line, starting on E $\flat$  and ending on E $\flat$ . The notation includes a key signature of three flats and a time signature of 4/4. The scale is written in a single line, starting on E $\flat$  and ending on E $\flat$ .

3 - A $\flat$  MAJOR SCALE (CONCERT A $\flat$ )

Musical notation for the A $\flat$  Major Scale (Concert A $\flat$ ) in bass clef, 4/4 time. The scale is written in a single line, starting on A $\flat$  and ending on A $\flat$ . The notation includes a key signature of four flats and a time signature of 4/4. The scale is written in a single line, starting on A $\flat$  and ending on A $\flat$ .

4 - D $\flat$  MAJOR SCALE (CONCERT D $\flat$ )

Musical notation for the D $\flat$  Major Scale (Concert D $\flat$ ) in bass clef, 4/4 time. The scale is written in a single line, starting on D $\flat$  and ending on D $\flat$ . The notation includes a key signature of five flats and a time signature of 4/4. The scale is written in a single line, starting on D $\flat$  and ending on D $\flat$ .

5 - G $\flat$  MAJOR SCALE (CONCERT G $\flat$ )

Musical notation for the G $\flat$  Major Scale (Concert G $\flat$ ) in bass clef, 4/4 time. The scale is written in a single line, starting on G $\flat$  and ending on G $\flat$ . The notation includes a key signature of six flats and a time signature of 4/4. The scale is written in a single line, starting on G $\flat$  and ending on G $\flat$ .

6 - B MAJOR SCALE (CONCERT B)

Musical notation for the B Major Scale (Concert B) in bass clef, 4/4 time. The scale is written in a single line, starting on B and ending on B. The notation includes a key signature of two sharps and a time signature of 4/4. The scale is written in a single line, starting on B and ending on B.

7 - E MAJOR SCALE (CONCERT E)

Musical notation for the E Major Scale (Concert E) in bass clef, 4/4 time. The scale is written in a single line, starting on E and ending on E. The notation includes a key signature of three sharps and a time signature of 4/4. The scale is written in a single line, starting on E and ending on E.

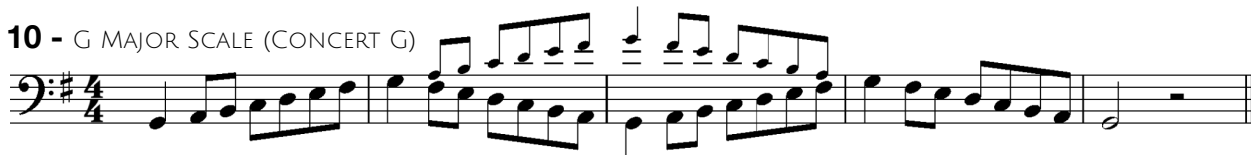
8 - A MAJOR SCALE (CONCERT A)

Musical notation for the A Major Scale (Concert A) in bass clef, 4/4 time. The scale is written in a single line, starting on A and ending on A. The notation includes a key signature of three sharps and a time signature of 4/4. The scale is written in a single line, starting on A and ending on A.

9 - D MAJOR SCALE (CONCERT D)



10 - G MAJOR SCALE (CONCERT G)



11 - C MAJOR SCALE (CONCERT C)



12 - F MAJOR SCALE (CONCERT F)



TEMPO CHECK OFF

Scale	1 OCTAVE 80 BPM	1 OCTAVE 100 BPM	2 OCTAVE 100 BPM	2 OCTAVE 120 BPM	2 OCTAVE 140 BPM
1 - CONCERT B $\flat$ MAJOR					
2 - CONCERT E $\flat$ MAJOR					
3 - CONCERT A $\flat$ MAJOR					
4 - CONCERT D $\flat$ MAJOR					
5 - CONCERT G $\flat$ MAJOR					
6 - CONCERT B MAJOR					
7 - CONCERT E MAJOR					
8 - CONCERT A MAJOR					
9 - CONCERT D MAJOR					
10 - CONCERT G MAJOR					
11 - CONCERT C MAJOR					
12 - CONCERT F MAJOR					